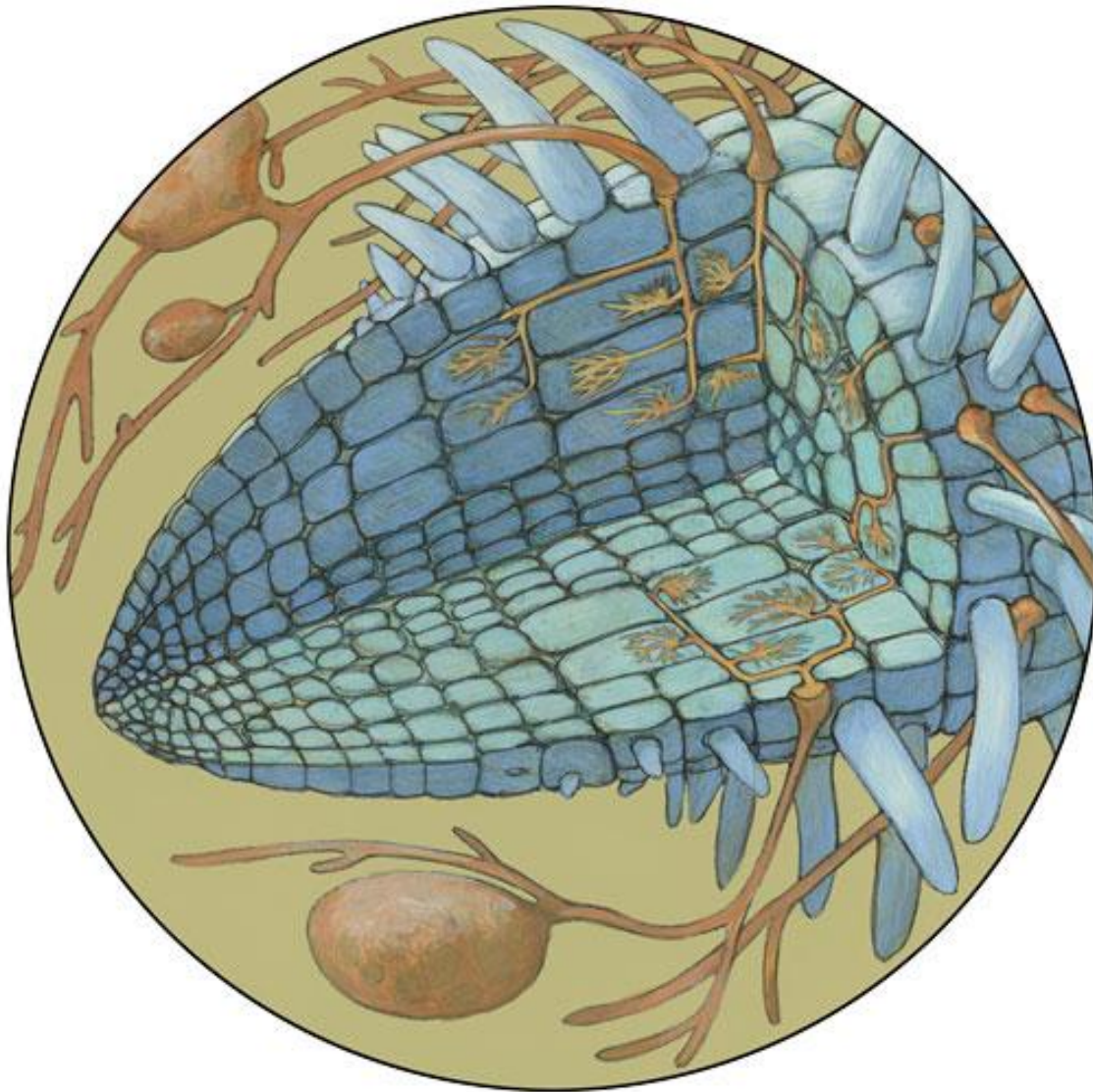


Hyphae



A white fungal network called hyphae, not plant roots, is the principal structure for the uptake of many important nutrients in the plant kingdom.
Illustration by Michael Rothman



The hyphae of mycorrhizal fungi are only a single cell wide, and they penetrate a root's cell wall to facilitate nutrient exchanges between the fungi and the root tip. This illustration is magnified about 200 times.

Illustration by Michael Rothman



Leeks inoculated with mycorrhizal fungi (right) grow much better than those planted without an inoculant (left).

Photo by Paul Pierlott